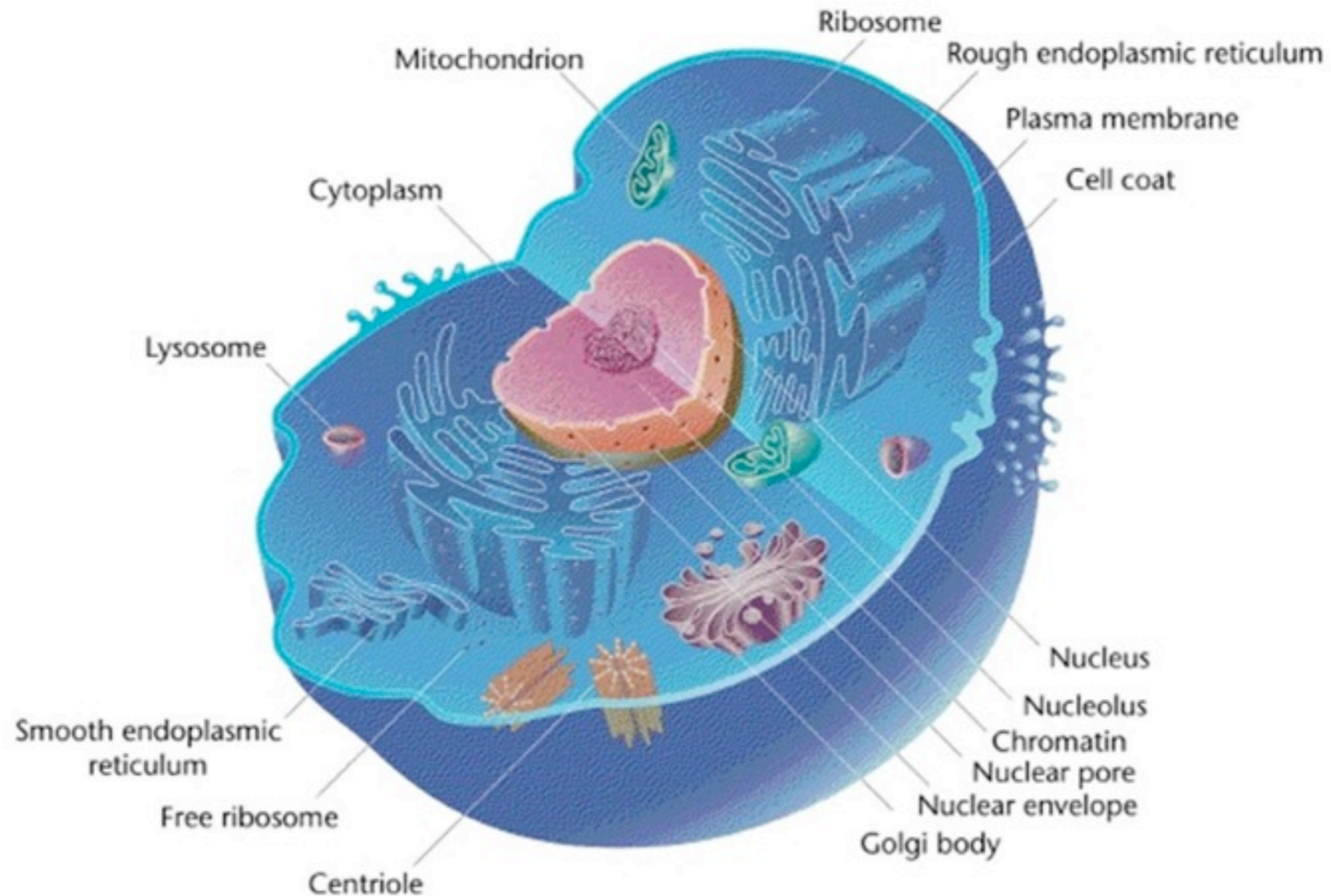
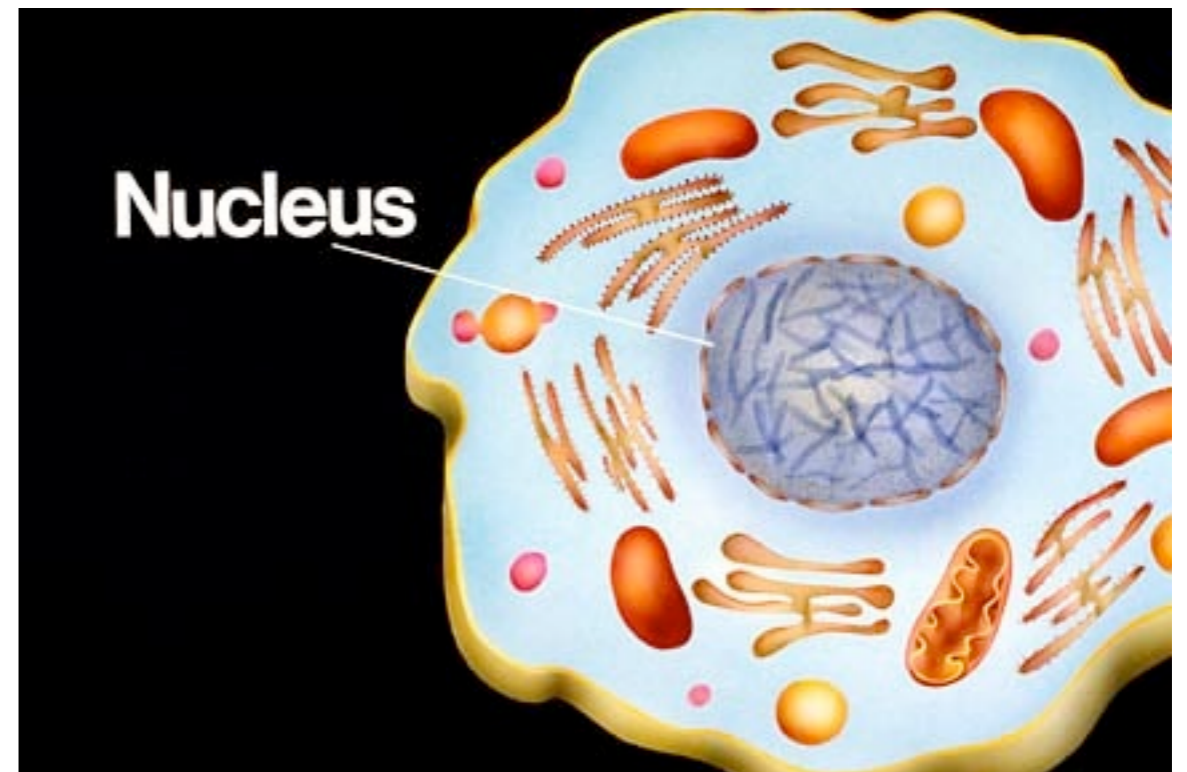


Cell Organelles



Nucleus

- Largest structure in cell (round)
- Located in centre of cell
- Surrounded by “nuclear envelope”
- Selectively permeable (only lets certain things through membrane”
- Contains DNA
- Control centre of cell



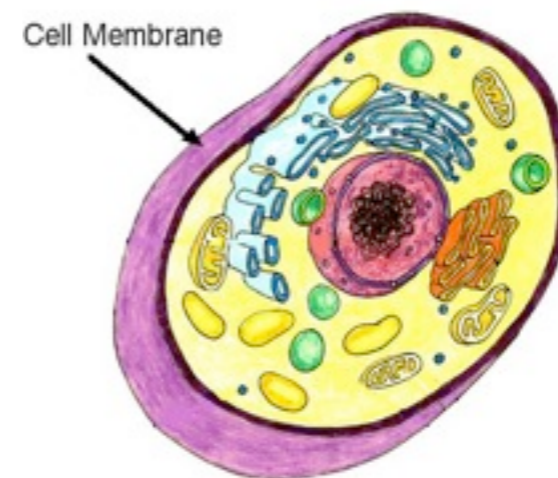
Cytoplasm

- Gel like substance; mainly water
- Holds the organelles in the cell
- Found throughout the cell; body of the cell
- Constantly streaming

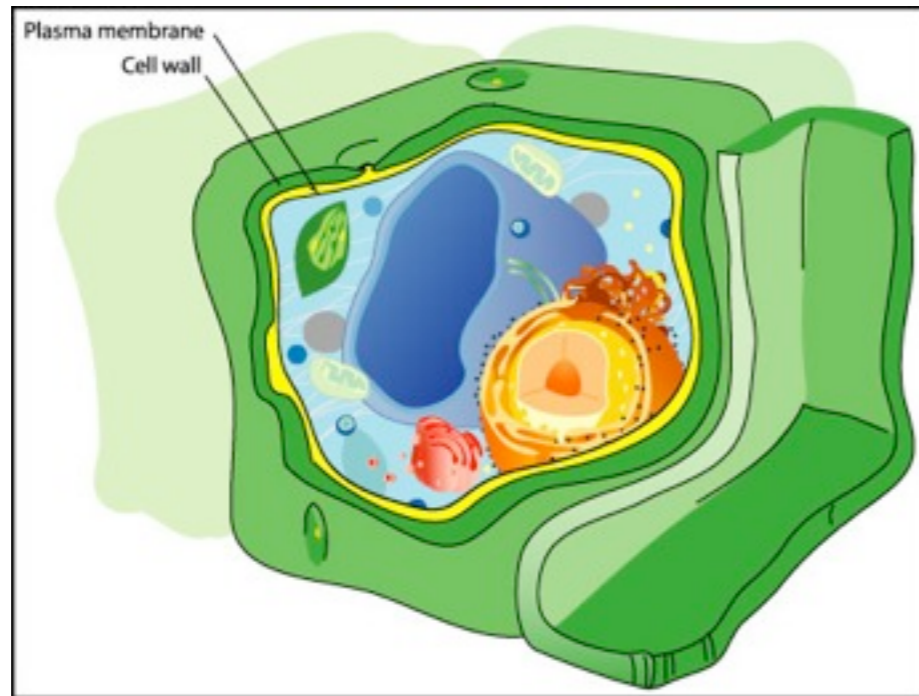


Cell Membrane

- Surrounds the cell; protection and stability
- Selectively permeable
- “fluid-like”; Components on membrane are always moving



Cell Wall



- Only found in plant cells
- Hard, rigid outer layer (outside cell membrane)
- Protection from outside environment and from explosion of the cell

Mitochondria

- Power-house of the cell
- Creates all energy for the cell in order to survive
- Energy through cellular respiration



Ribosome

- Small, circular organelles found in cytoplasm and on the endoplasmic reticulum
- Create proteins for the cell
- Factories of the cell



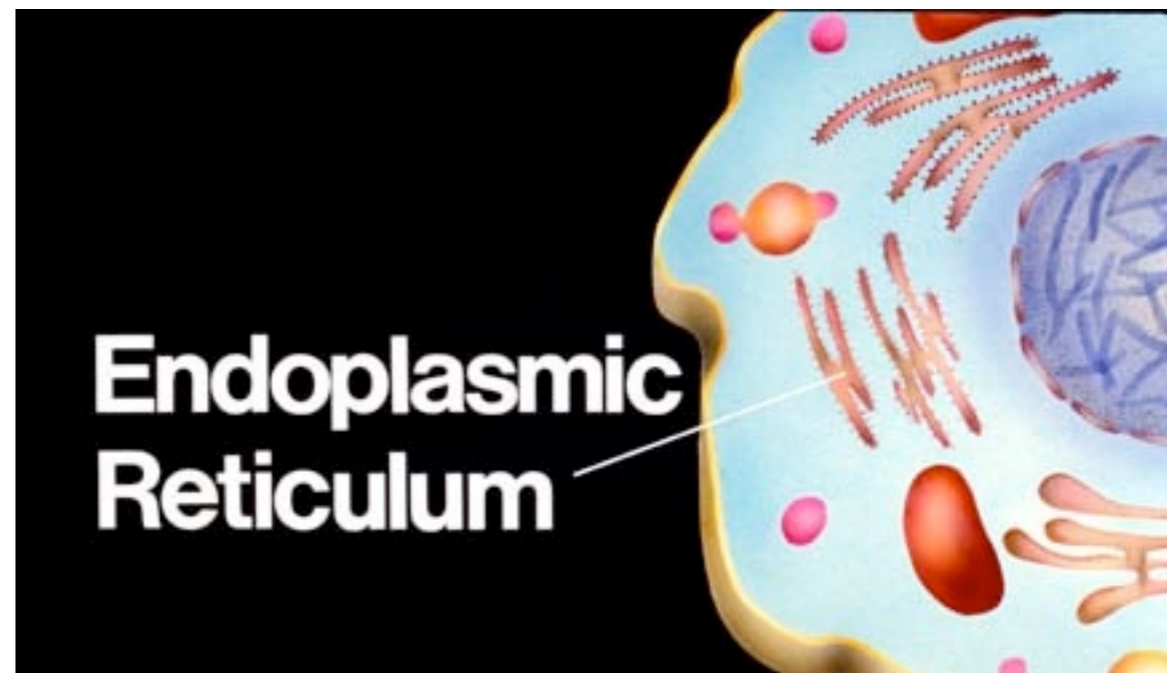
Golgi Body



- Flattened sacs
- Package proteins and other substances for transport out of the cell
- The post office of the cell

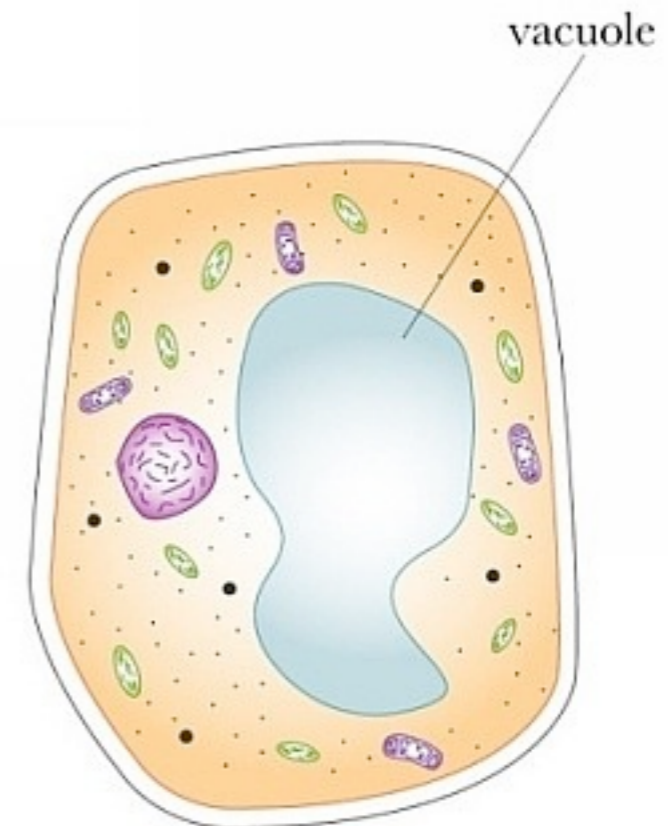
Endoplasmic Reticulum

- membranous canals filled with fluid
- transport substances around the cell
- highway of the cell
- Two types: Smooth (no ribosomes) and Rough (ribosomes)



Vacuole

- fluid filled organelles enclosed by membrane
- store food, water, waste products in the cell
- larger in plants: hold water



Chloroplast

- Found only in plant cells
- Site of photosynthesis (create energy from sun)

