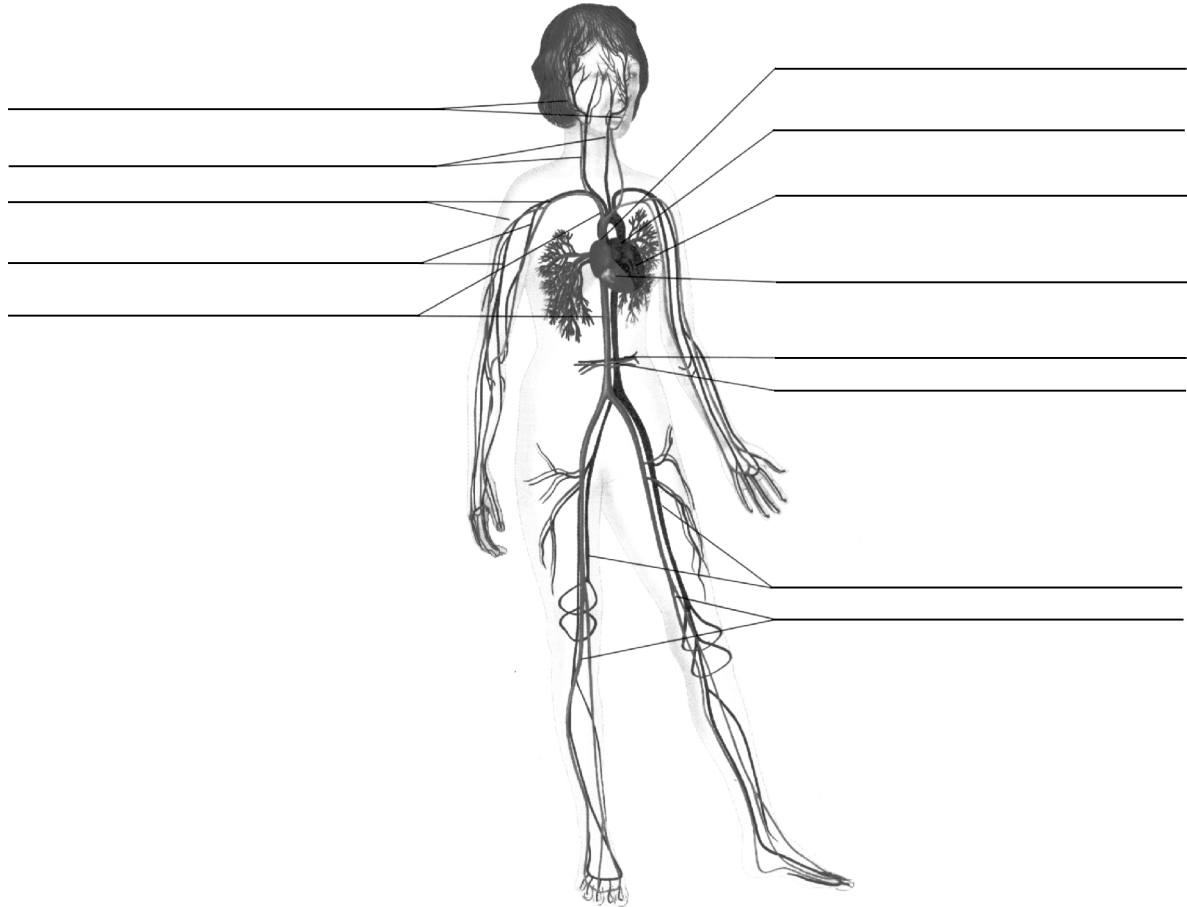


# Organ Systems in Humans: The Circulatory System

**Goal** • Review terms related to the circulatory system.

## What to Do

Using the diagram on page 85 of BC Science 8, label the parts of the circulatory system.



1. Which structures connect the arteries and veins?

---

2. Which vessels transport blood away from the heart and have thick muscular walls?

---

DATE:

NAME:

CLASS:

**BLM 1-34**  
**continued**

Continued on next page

DATE:

NAME:

BLM 3-11  
continued

3. Which vessels transport blood toward the heart and have valves?

---

4. Which part of the heart receives blood from the lungs?

---

5. Why is the circulatory system important to humans?

---

---

---

6. Which structures are included in the circulatory system?

---

---

---

7. Why are capillaries small and thin?

---

---

---

8. Name the parts of the heart. Why do you suppose the heart needs all these parts?

---

---

---

---